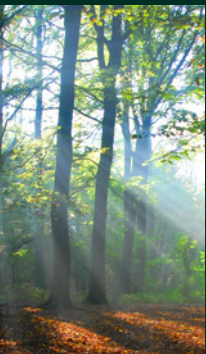


your house, your home...




CYGNUM[®]
TIMBER FRAME



ABOUT US

- Manufacturing timber frame homes since 1996
- Based in Macroom, Co Cork
- Industry leaders in Timber Frame manufacturing
- Wide range of sustainable Timber Frame options
- The only Irish timber frame company with a Passivhaus certified building system.

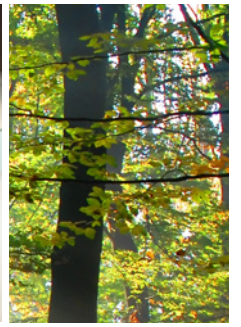


a merging of tradition and innovation...

At Cygnum, we know what it takes to build a great timber frame home. As pioneers in our industry we nurture a spirit of innovation. We develop innovative products which enhance the living quality of your Cygnum home. Our unique **Precision®** and **Reflect®** ranges are the latest in a long line of such innovations. We have featured in *About the House*, *Grand Designs*, *Our House* and *Designs for Life*. We have earned recognition in the Off-Site Construction Magazine Awards and the Irish Exporters Association Awards. We are the only timber frame manufacturer in Europe to have received an EU research commission, having been awarded a European wide project to develop cost effective methods for increasing the use of environmentally friendly materials in timber frame. **Cygnum are the only Irish timber frame company with a building system certified by the Passivhaus Institute in Germany.**

...giving you a home for your future

CYGNUM®
TIMBER FRAME



imagine living in a healthy, energy efficient, eco-friendly home...

When we started building timber frame homes, our customers were focused on achieving superior levels of energy efficiency, speed of construction, and cost effectiveness. While the fundamentals have never changed, one thing that has dramatically changed is our customers desire for even greater levels of energy efficiency, delivered in an environmentally friendly package. In response, we have developed timber frame systems that offer energy levels second to none. The challenge for us is to ensure we deliver what our customers want without compromising on our reputation for value. Whether you want a passive home, an A-rated home or simply an eco friendly, cost effective home, we have an option to suit.

With our technology and automation, we can guarantee that all our panels are produced to the highest quality standards. Combining our experience and research, we have developed unique techniques to precisely insulate and seal every panel. Not forgetting, that by using environmentally friendly, sustainable and natural materials, we create a home that is healthy for you and the environment.



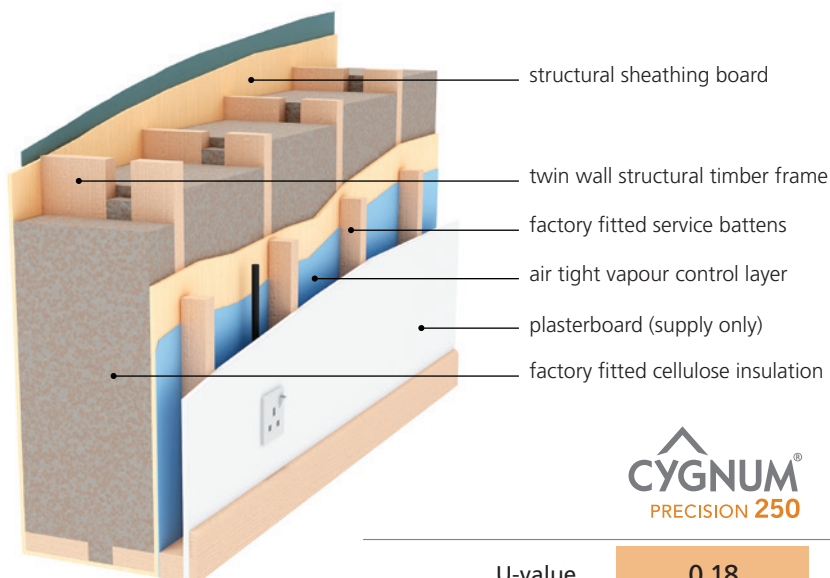
A CYGNUM HOME

- Highly energy efficient
- Natural and sustainable materials
- Delivered to site and constructed within days
- Excellent value
- Easy to heat
- Air tightness tested and certified

...we have it all wrapped up

CYGNUM[®]
TIMBER FRAME

CYGNUM WALL SYSTEMS



Precision® range

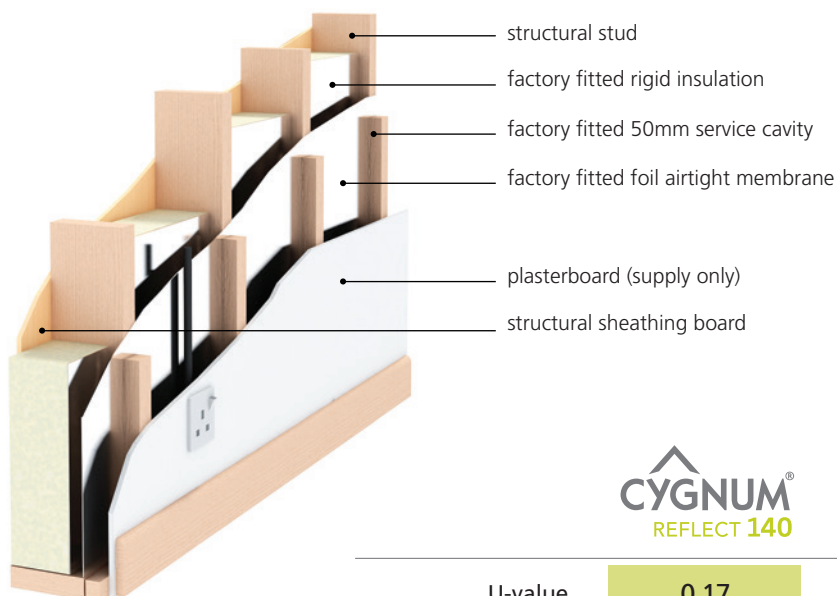
A closed wall system, with exceptional 'eco' credentials delivering outstanding energy efficiency.

Our **Precision®** range of closed wall panels are factory insulated, with exceptional U-values and are fully sealed for air control. With factory installed service battens, you can start plumbing and electrical work once the timber frame erecting is complete. **Precision® 300** utilises our twin wall system which greatly reduces thermal bridging.

CYGNUM®
PRECISION 250

CYGNUM®
PRECISION 300

U-value	0.18	0.13
Insulation	Factory fitted	Factory fitted
Air tightness	Factory fitted	Factory fitted
Service battens	Factory fitted	Factory fitted
Air tightness testing	Included	Included



Reflect® range

A cost effective closed wall system enabling you to achieve a great Building Energy Rating (BER).

Our **Reflect®** range of closed panels are factory insulated and closed on the inner face with an airtight membrane and service battens. The combination of foil surfaces and rigid PIR insulation are used to optimise performance and minimise cost. The factory fitting of the airtight membrane and service battens greatly reduce site works.

CYGNUM®
REFLECT 140

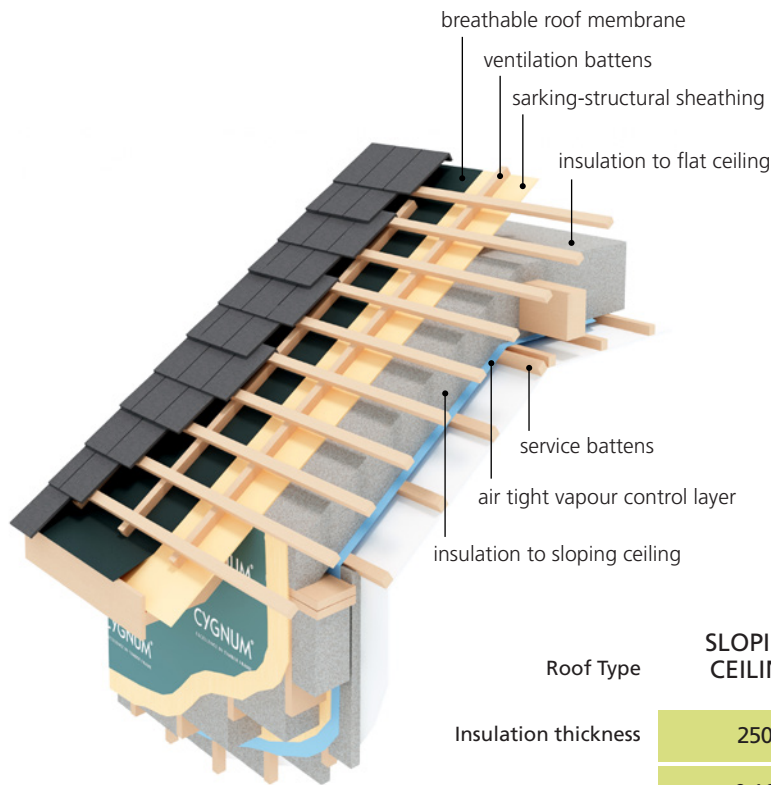
CYGNUM®
REFLECT 200

U-value	0.17	0.15
Insulation	Factory fitted	Factory fitted
Air tightness	Factory fitted	Factory fitted
Service battens	Factory fitted	Factory fitted
Air tightness testing	Included	Included

commitment to innovation...

CYGNUM®
TIMBER FRAME

CYGNUM ROOF AND MID-FLOOR SYSTEMS

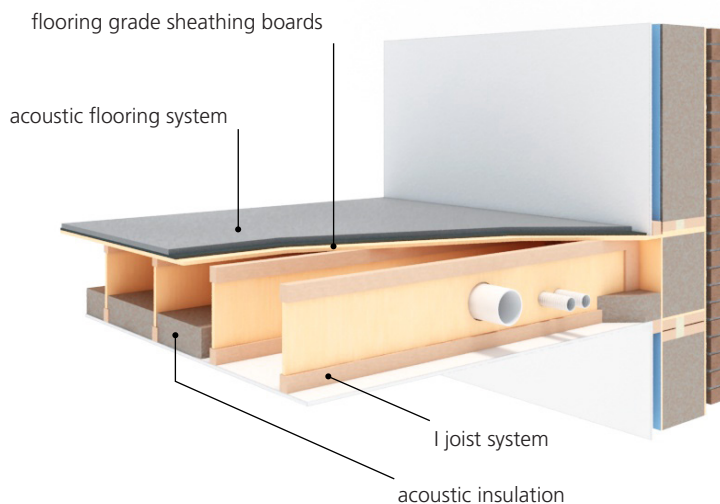


Roof

Cygnum design roof structures for maximum insulation and airtightness.

Our rigid sarking board and large rafter size allow for thick insulation to the often restricted sloping area. As part of our **Reflect®** and **Precision®** ranges, our service includes fitting insulation, airtight membranes and service battens. Our range of options available are designed to suit all needs and include the following.

Roof Type	SLOPING CEILING	SLOPING CEILING	FLAT CEILING	FLAT CEILING
Insulation thickness	250	300	300	400
U-value	0.16	0.14	0.15	0.11



Mid-Floor

Cygnum floors are designed to the highest structural standards.

As part of our **Reflect®** and **Precision®** ranges we offer our acoustic floor system. This I joist system provides a simple solution for fitting services and heat recovery ventilation ducting. The I joists and acoustic floor work together to reduce noise transfer between floors. With the system we can easily allow for under floor heating screeds.

Cygnum's Passive House Certified System

- **Passive 350®** features a 300mm twin wall sheathed on both sides with 9mm OSB, with a membrane on the inside forming the airtight layer.
- **Passive 350®** achieves a U-value of 0.13 and this can be increased or reduced by altering the dimensions of the thermal break.
- To achieve certification, we had to ensure that materials, detail design and factory quality controls were to the highest standard. Four key factors had to be addressed: U-values, airtightness, thermal bridging, and interior surface temperatures. The fact that **Passive 350®** is certified will reduce the cost of building a passive house.



focus on the highest standards...

CYGNUM®
TIMBER FRAME



It's your home... your choice

The Cygnum Timber Frame System has been designed to offer an unrivalled choice to suit all customers. For energy efficiency, our external wall options start at 140mm and run all the way up to a potential 350mm of high density insulation. Our **Precision®** and **Reflect®** ranges of closed panels offer cost effective solutions produced in 'state-of-the-art' factory controlled conditions. Furthermore, when the frame is weather tight we can take responsibility for fitting your insulation, airtight membrane and service battens to the roof giving you a completed external envelope.

Cygnum's team of experts are able to take your building project through the Engineering, Design and Manufacturing process with the final product being delivered to site and erected by our experienced on site personnel. By simplifying the building process a Cygnum home ensures a stress-free experience for all our clients.



quality second to none...

CYGNUM®
TIMBER FRAME



because your home is the only home that matters to you...



Cygnum have an obvious depth of experience and understanding of what good timber frame practice is about.

Duncan Stewart, Architect & TV Presenter

Cygnum is the best timber frame company I've ever dealt with. With the excellent design, manufacture, installation and final product, I would have no problem referring them to anybody.

Jason Seitz, Engineer, Co Dublin

Cygnum's is the best timber frame package on the market.

Dr Eamonn McKeogh, UCC

Our practice has commissioned Cygnum to provide timber frames for many of our bespoke houses. The intelligent advice and technical expertise they bring to our projects has proved to be invaluable. It is a testament to our confidence in Cygnum, that we now introduce Cygnum to our clients early in the design process to answer queries in relation to the energy efficiency of their project, and will soon be using Cygnum on our most prestigious bespoke housing project in years. Their meticulous attention to detail complements the high quality service we provide. We have found their on-site work and after care service to be first rate.

Andrew Lane, Managing Director, Andrew Lane Architects Ltd.

We bought a Precision 300 kit from Cygnum Timber frame and employed Cygnum to erect this up to roof level and insulate the roof space. The build process went very smoothly with kit delivery on time and the building shell was fully erected in a matter of weeks. We would definitely recommend using Cygnum Timber frame to anyone considering building a timber frame house and would like to thank Cygnum for their part in building us the highly insulated and very comfortable home that we envisaged at the start of the process.

Jeremy Gibson, Kinsale, Co. Cork



We have had the pleasure of working with customers the length and breadth of Ireland and above all else, our commitment to customer service is what our customers remember most. This commitment runs right through the business from your first point of contact to your very last. Having supplied timber frame homes for many years, we have built up a wealth of satisfied customers happy to sing our praises.

...it's the only home that matters to us

CYGNUM[®]
TIMBER FRAME



If you would like to talk to us about your home, please contact us at:

Cygnum
Macroom
Co Cork
Tel: 026 21100
Fax: 026 21199
Email: info@cygnum.ie
www.cygnum.ie

CYGNUM[®]
TIMBER FRAME

THE NATURAL WAY TO BUILD

